

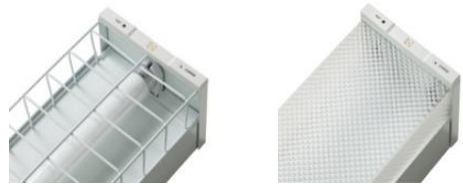
LED Emergency Light



EO-1200-1x18-EM Batten



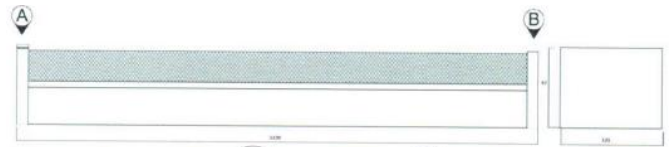
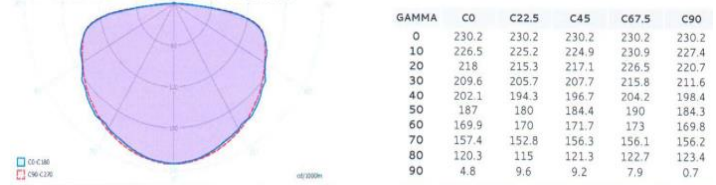
Inbuilt Emergency LED works independent of LED tube



Also available with Wireguard or with Diffuser

SPECIFICATIONS	
Product Code	Eo-1200-1x18-EM Batten
Colour	White
Power Consumption	17.32W (LC9 using 1 x Eo T81200-18W)
Beam angle	120 degree
Lens	Clear or Frosted tube cover available
Operational Voltage/ Frequency	180-240V, 50 -60Hz
Colour Temperature	Warm White 2700K-3500K Cool White 4000K, 5000K Daylight 6000K-6500K
Light Output	1510lm – 1630lm
Colour Rendering Index	>82 CRI
Power Factor	>0.95
Operating Humidity	>95%
Operating Temperature	-20' to 50'C
Emergency Duration	2 hours
Battery Type	NiMH (contains no Cadmium)
Charging time	16hrs (trickle charge)
Housing	Body – White powder coated steel Tube- Aluminium & Thermoplastic
No. of LEDs	252 x SMD
Expected Life	50,000 + hours
Compliance	Batten- Temperature & Duration- Light Lab International – LL111 8701T Emergency Classification – Light Lab International –LL14729 Led tube (Electrical Product Certification Services AUSTRALIA) electrical compliance SGS No.100839 compiles with AS/NZS 60598.2.1:1998 with AS/NZS 60598. 1:2003 and ICE 61347.2.13:2006 and 61347. 1:2002 (certified 5 th Jan 2011 expiry 4 th Jan 2016) N28689
Green Energy Scheme	This product is approved for use in NSW Energy Saving Scheme
Dimensions	1230Lx121Wx97H
Net Weight	3.6kg including fitting and tubes
Warranty	4 years

EMERGENCY PHOTOMETRIC DATA



Wireguard – EO-WG-1200
Diffuser – EO-DF-1200

For more information visit our website: www.eolighting.com.au