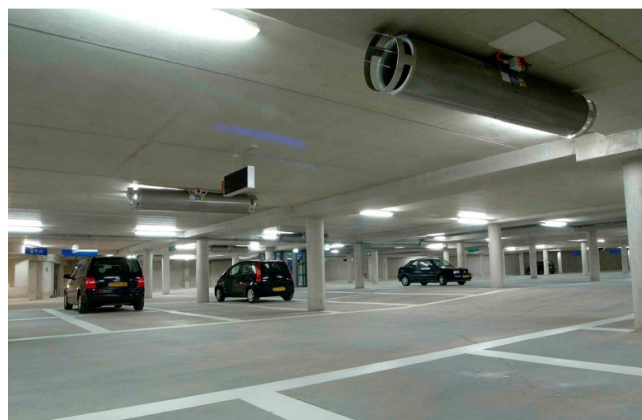
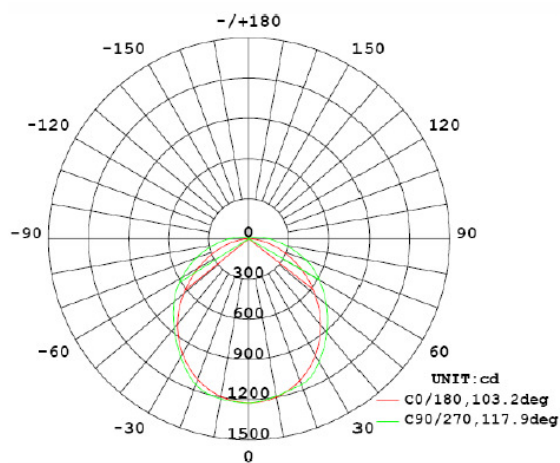


LED Weatherproof Batten

EO-1200-WP-2X18W



SPECIFICATIONS	
Model Number	EO-1200-WP-2X18W
Beam Angle	120°
Consumption	34.86 watts (LCP)
LED Total Luminous Flux	3809.7 lumens
LED Luminous Efficiency	109.29 lumens / watt
Power Factor	0.9454
Input Voltage	240 Volts, 50 Hz
Lamps Efficiency	>85%
Material	Aluminium & Thermoplastic Lens Frosted Poly carbonate
Working Temperature	- 25°C to + 50°C
IP Rating	IP 65
Colour Temperature	Warm White 3000 – 3500 kelvin Cool White 4000 – 4500 kelvin Daylight 5000 - 6000 kelvin
Colour Rendering Index CRI	Ra 80.4
Certificate	AS/NZS CISPR 15:2011 SAA 142145 IEC 60598.2.1:2014 IEC 61346.2.1:2003 N28689
Dimensions	1272 x 158 x 100mm
Net Weight	3.05 Kg
Life Expectancy	35,000 + Hrs
Warranty	5 Years



LED High efficiency Weatherproof IP65 rated batten replacement for T8 and T5

Application: Car parks, industrial, manufacturing plants, food preparation, outside buildings, under awnings