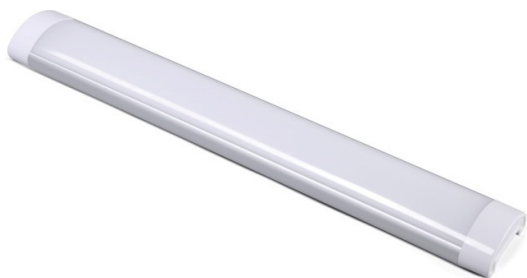


## LED Slimline Surface Mount Batten

## EO-SSMB- 600-10W



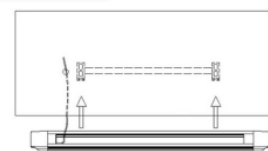
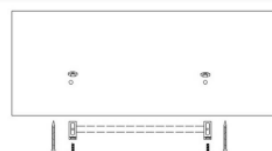
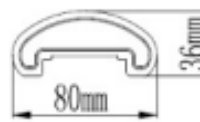
SPECIFICATIONS	
Model Number	EO-SSMB-600-10W
Beam Angle	150°
Consumption	10 watts (LCP)
LED Total Luminous Flux	900 lumens
LED Luminous Efficiency	90 lumens / watt
Power Factor	>0.70
Input Voltage	240 Volts, 50 Hz
Lamps Efficiency	>85%
Material	Aluminium & Thermoplastic Lens Frosted Poly carbonate
Working Temperature	- 25°C to + 65°C
IP Rating	IP 44
Colour Temperature	Warm White 3000 – 3500 kelvin Cool White 4000 – 4500 kelvin Daylight 5000 - 6000 kelvin
Colour Rendering Index CRI	Ra >80.
Certificate	SAA 152499 AS/NZS 60598.2.1:2014 AS/NZS 60598.1.2013 AS/NZS CISPR 15:2011  N28689
Dimensions	600L x 80W x 35Hmm
Net Weight	2.05 Kg
Life Expectancy	50,000 + Hrs
Warranty	3 Years



Slim line design



Easy mount system



LED High efficiency slimline low profile IP44 surface mount batten replacement for T8 and T5 600mm batten

**Application:** Office – classroom lighting, fire stairs, indoor car parks, warehouse , food preparation areas etc