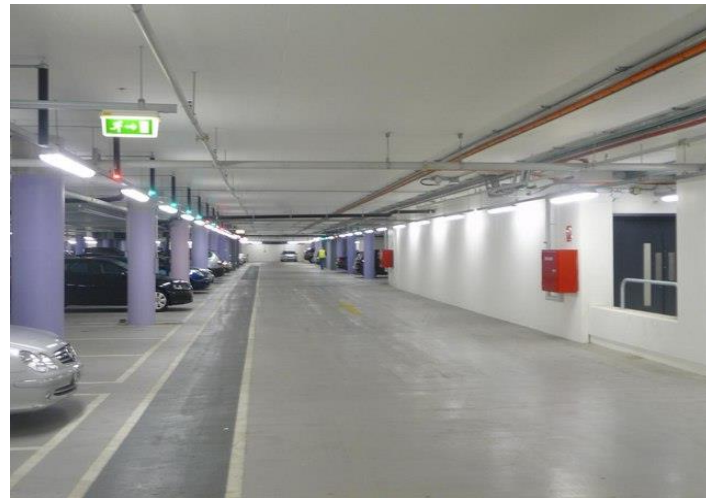



LED Weatherproof Batten with Sensor

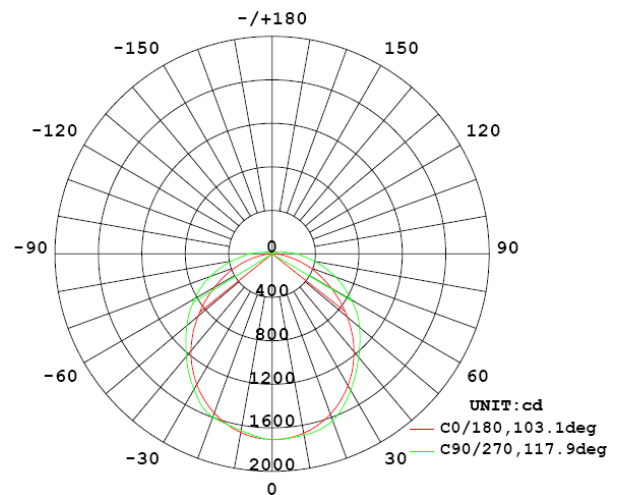
EO-1200-WP-2X25W-S



PECIFICATIONS	
Model Number	EO-1200-WP-2X25W-S
Beam Angle	120°
Power Consumption	50.75 watts (LCP)
LED Total Luminous Flux	5310.4 lumens
LED Luminous Efficiency	104.64 lumens / watt
Power Factor	0.9109
Input Voltage	240 Volts, 50 Hz
Lamps Efficiency	>85%
Sensor	Microwave- <8Ghz / <10mW
Sensor Angle coverage	360°
Sensing distance	1-8m (user adjustable)
Sensor Time Delay	3 sec – 4 minutes (user adjustable)
Photosensing	2- 2000lux (user adjustable)
Material	Aluminium & Thermoplastic Lens Frosted Poly carbonate
Working Temperature	- 25°C to + 50°C
IP Rating	IP 65
Colour Temperature	Warm White 3000 – 3500 kelvin Cool White 4000 – 4500 kelvin Daylight 5000 – 6000 kelvin
Colour Rendering Index CRI	Ra80.4
Certificate	AS/NZS CISPR 15:2011 SAA 142145 IEC 60598.2.1:2014 IEC 61346.2.1:2003  N28689
Dimensions	1272 x 158 x 100mm
Net Weight	3.15 Kg
Life Expectancy	35,000 + Hrs
Warranty	5 Years



In built microwave sensor



LED high efficiency Weatherproof IP65 rated batten

Microwave sensor can penetrate wooden door, glass and thin walls
Adjustable time delay, sensor distance and photo sensing.

LED High efficiency Weatherproof IP65 rated batten replacement for T8 and T5

Application: Car parks, industrial manufacturing plants, food preparation, outside buildings, under awnings